

Keyhole

50 & 60

TurnKey

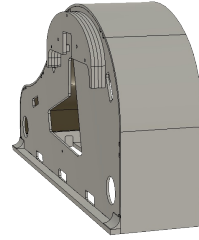
Piano
Shell

User Manual

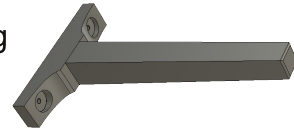


Packaging contents

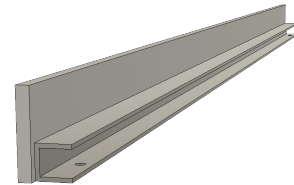
x1 - Main body section



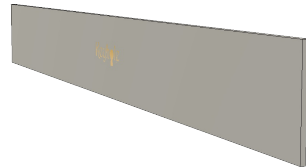
x3 - Leg



x1 - Lip



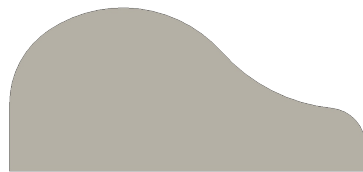
x1 - Backboard



x1 - Top



x1 - Lid



x2 - Lip Knob
1/4"-20 x 3/4" long knob



x2 - Carriage Anchor Knob
1/4"-20 x 2" long knob

x6 - Leg Hardware
3/8"-16 x 1.5" long wing screw



x2 - Hinge Pin



Assembly Instructions

Begin with the main body of the piano upside down.

If purchased, keep the soft case on at this point. Only unbuckle the straps.

Attach the legs hardware by hand.

Turn the piano right-side up.
If purchased, keep the soft case on at this point.

Once upright, If purchased, remove the case.

Remove the carriage anchor knobs.

Turn the sleds outward into fully open position.

Loosely thread the sled hardware with the carriage anchor knobs. Do not fully tighten at this step.

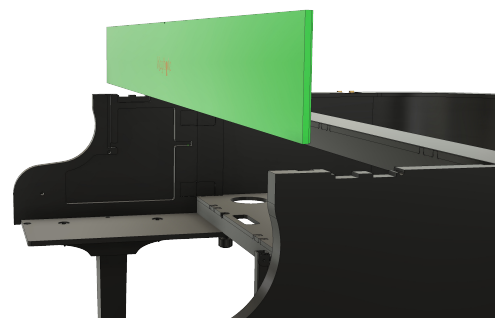


Assembly Instructions cont.

Attach pedal lyre (if purchased)



Slide the backboard down into the slot with the logo facing out.



Place top in position. Top slides into frame hardware.



Attach the front lip and use the lip hardware to anchor it in place.



Fully tighten the carriage knobs from the earlier step.

Assembly Instructions cont.

This is the best time to install the keyboard and run wires.

If purchased, install the interior panel.

Place lid in position and line up the hinges.

Install the remaining accessories, if purchased.



Insert the hinge pins.



Assembly is complete!