

Keyhole

Console and Spinet
Upright



User
Manual

Packaging contents

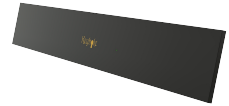
x1 - Main body section



x1 - Top

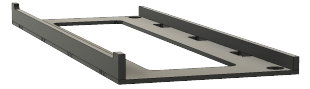


x1 - Backboard
(Console only)

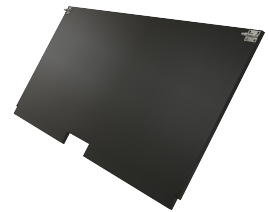


Optional components

x1 - Keyboard tray



x1 - Knee panel



Assembly Instructions

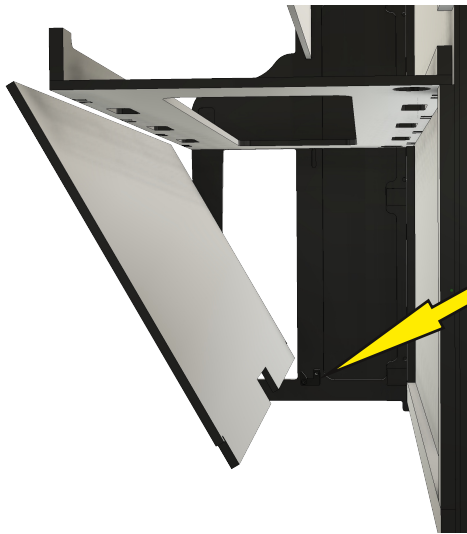
Begin by unfolding the main body sides out 90-degrees.



Install the keyboard tray [IF EQUIPPED] by resting the rear of the tray in the slots provided and engage the front corners in the rail hardware.

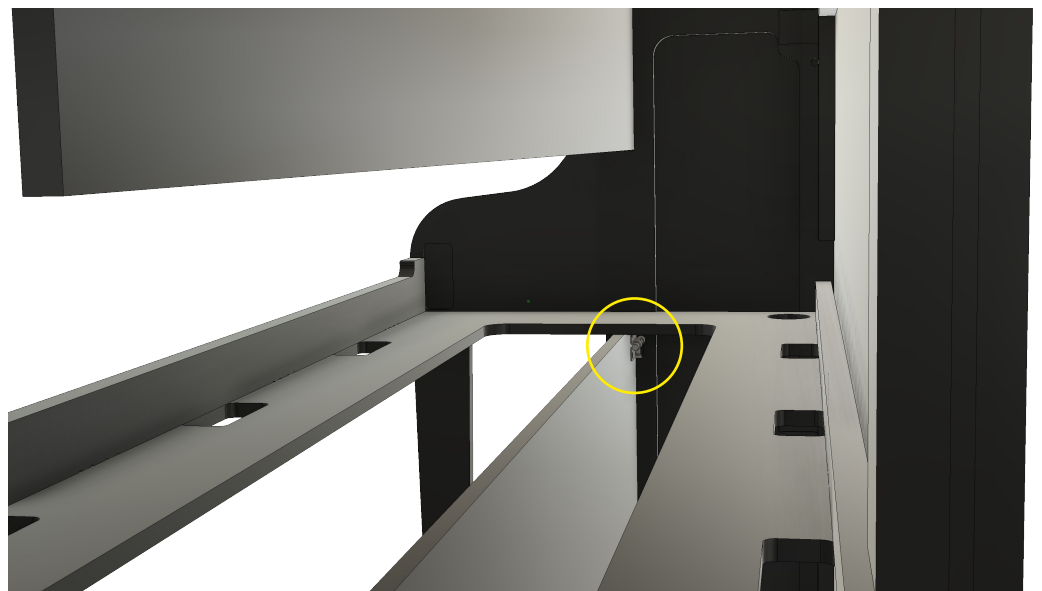


Place the backboard and top on. The backboard (console model only) slides into the grooves in the sides.



The kneeboard [IF EQUIPPED] tilts into the catches on the lower center of the sides.

Engage the barrel locks to secure knee board.



Now's a good time to run cabling. The last step is installing your keyboard and you're finished with assembly.

Disassembly is the reverse.

