

Keyhole

30-inch

KeyWee

&

40-inch

WhisKey

Piano

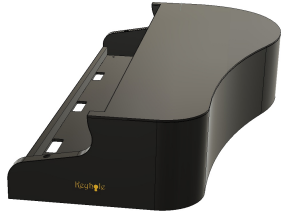
Shell



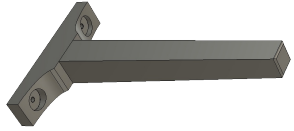
**User
Manual**
v1.0

Packaging contents

x1 - Main body section



x3 - Leg



x6 - Leg Hardware

5/16"-18 x 1-1/4" long wing screw



Optional

x1 - Lid



x2 - Hinge Pin

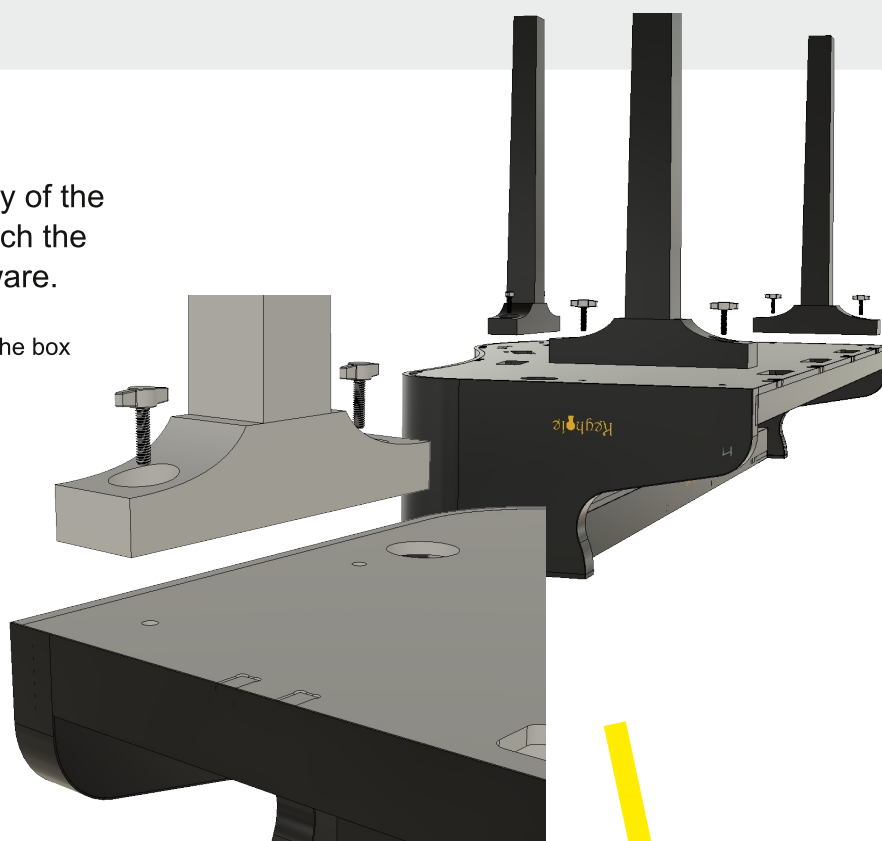


Assembly Instructions

Begin with the main body of the piano upside down. Attach the legs using the leg hardware.

The leg hardware is shipped in the box with the legs.

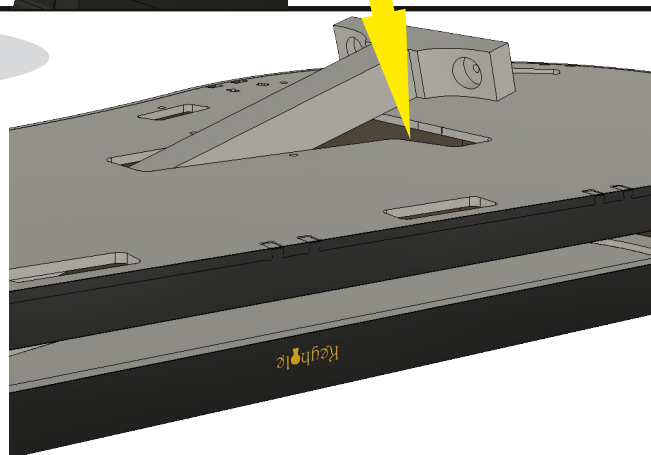
This is a good time to attach the pedal lyre - optional (see pedal lyre manual for instructions)



Base model only

The legs store inside the shell with the hardware.

Store the hardware in the storage container (yellow arrow) inside the main body. Alternatively, store the leg hardware in the pocket of the optional case.



Tip the piano right-side up.

Assembly is complete.



