

# Keyhole Pianos Specification Sheet

## Description:

A Keyhole Piano is a hollow wooden shell designed to visually mimic an acoustic grand piano, but instead houses an electronic musical keyboard. This allows the unit to be lighter and more mobile as well as eliminating maintenance costs associated with cleaning and tuning. There are a number of models available and the models are determined by size.

## Models:

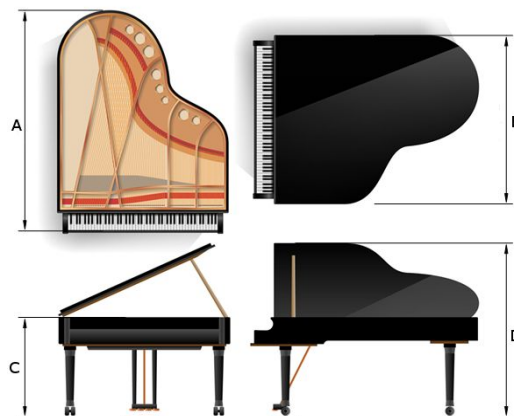
60" Grand - The closest visual representation of a baby grand; Large full scale legs and accurate proportions; Prop-open lid

48" Grand - A smaller version of the 60" Grand; Large full scale legs; Prop-open lid

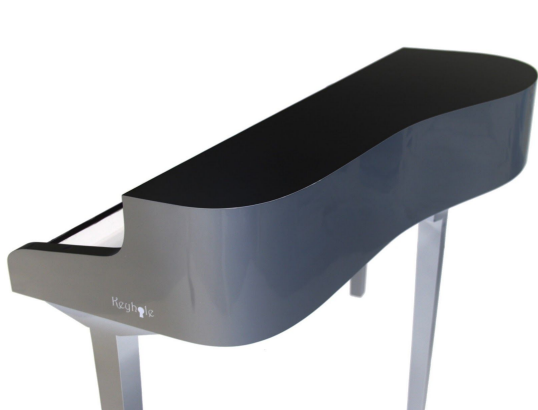
36" Mobile - A miniature version of a baby grand; Skinny legs to match the smaller body size.

30" Mobile - A smaller version of the 36" Mobile; Skinny legs; Ultra mobile

| Tech Specs       | 60" Grand | 48" Grand | 36" Mobile | 30" Mobile |
|------------------|-----------|-----------|------------|------------|
| A (in inches)    | 60-3/8    | 48-3/8    | 36-3/8     | 30-3/8     |
| B (in inches)    | 60-3/4    | 60-3/4    | 60-3/4     | 60-3/4     |
| C** (in inches)  | 38-1/2    | 38-1/2    | 37-1/2     | 37-1/2     |
| D** (in inches)  | 62-1/2    | 62-1/2    | N/A        | N/A        |
| Weight* (in lbs) | 140       | 120       | 60         | 45         |



\*approx; fully assembled \*\*without casters



30" Mobile



60" Grand with lid up  
Shown with keyboard



60" Grand with lid down  
Shown with keyboard